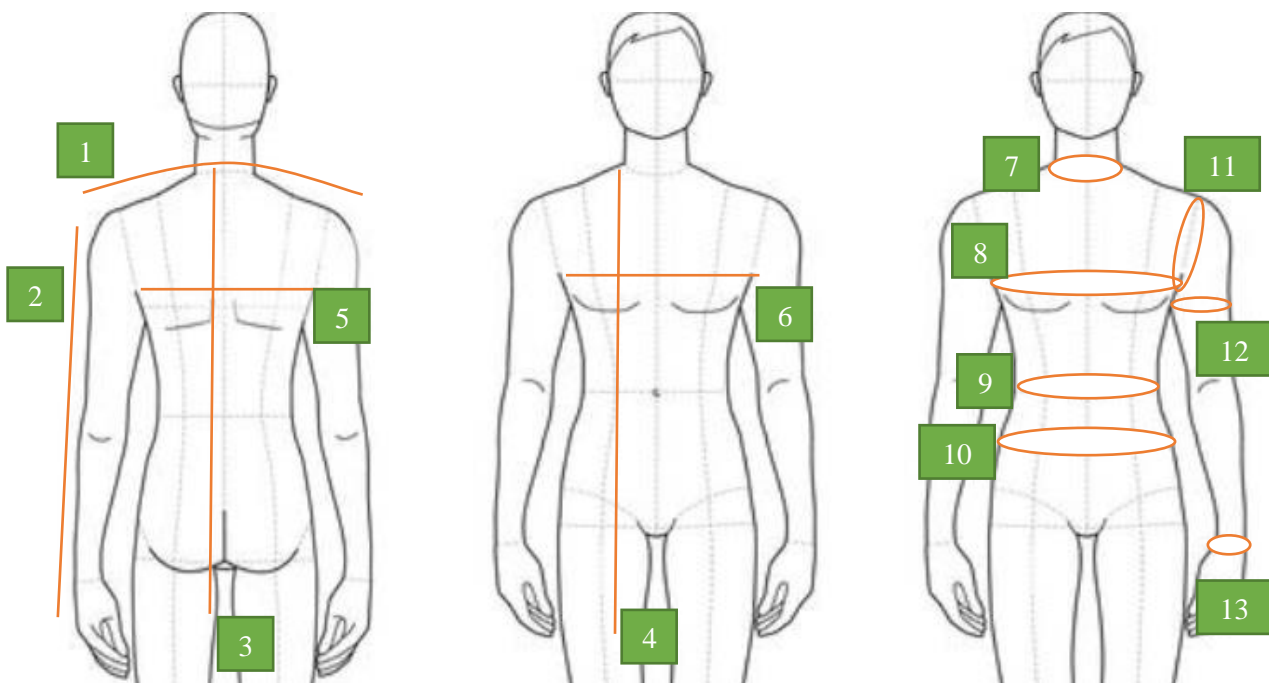


# Tailor Made Suits

## Guide for self-measurement (tailoring products)

### Jacket's & shirt's measurements

1. Shoulder .....
2. Sleeve's length (take actual preferred length) .....
3. Jacket length (back) – (should cover seat area at least) Shirt: we will adjust accordingly. ....
  - a. For waistcoat: please indicate if applicable (should cover the belt) .....
4. Jacket length (front). Shirt: we will adjust accordingly. ....
  - a. For waistcoat: please indicate if applicable (should cover the belt) .....
5. Half chest (back) .....
6. Half chest (front) .....
7. Neck circumference (check for your comfort level) .....
8. Full chest circumference .....
9. Waist circumference (smallest part) .....
10. Stomach circumference (largest part – around belly button) .....
11. Armhole .....
12. Bicep .....
13. Wrist .....

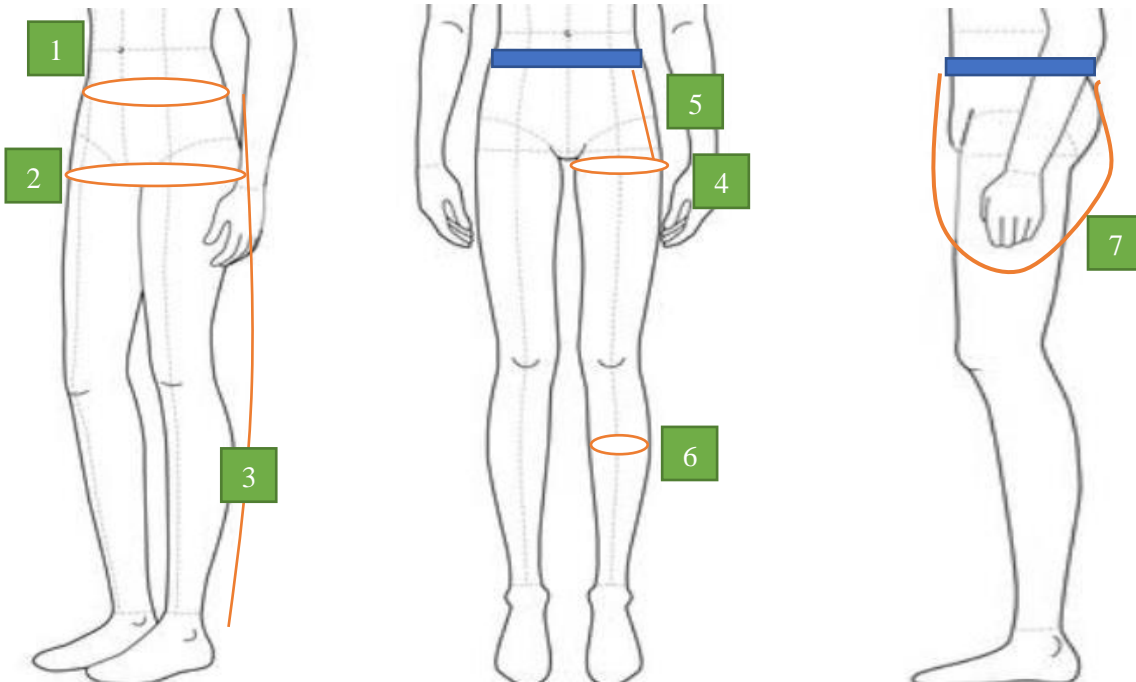


We will adjust the jacket / shirt/ waistcoat accordingly

Typically, from the same measurements, shirt will be slightly larger than jacket.

### Trousers' measurements

1. Hip circumference (around hip bone – or where trousers normally be worn) .....
2. Seat area (largest part) .....
3. Outside leg (please indicate if it is full length, or around ankle) .....
- a. Inside leg (optional) .....
4. Thigh circumference .....
5. Distance from hip to thigh .....
6. Calf .....
7. Crouch (front to back, base on hip measurement (usually below belly button) .....



### Other information required

1. Please include 3 photos of you (front facing, on the side, and from the back)
  2. Indicate your height and weight.
  3. Let us know what fit you preferred (slim/regular/loose fitting)
4. If styling is required we will send you a styling selection separately (in the case of weddings, usually the groom will decide on the styling for the whole group, to keep it consistent).