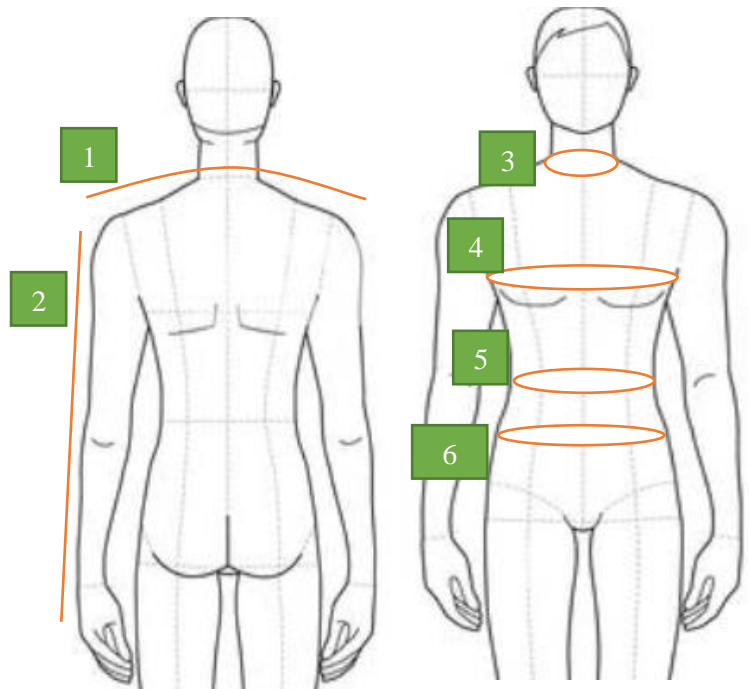


Tailor Made Suits

Guide for self-measurement (suit hire products)

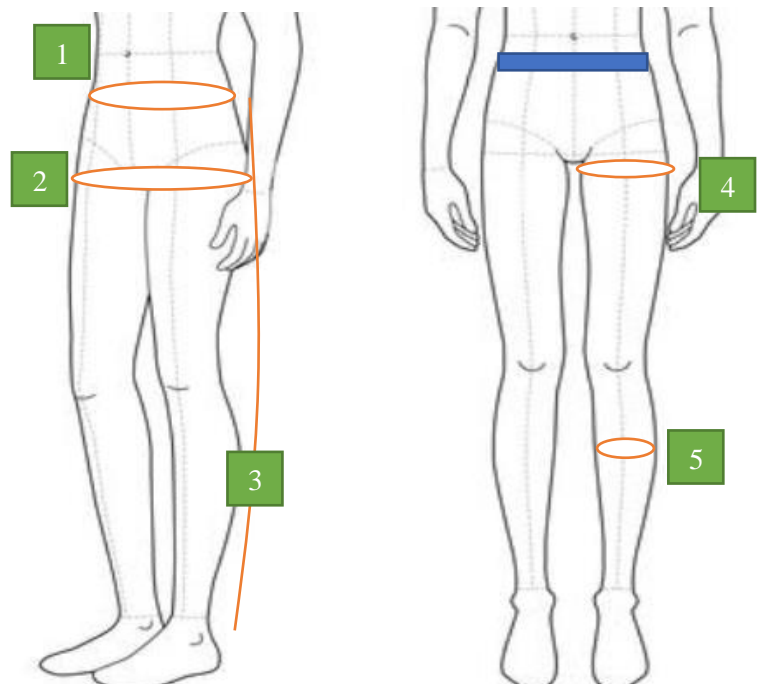
Jacket's & shirt's measurements

1. Shoulder
2. Sleeve's length (take actual preferred length)
3. Neck circumference (check for your comfort level)
4. Full chest circumference
5. Waist circumference (smallest part)
6. Stomach circumference (largest part – around belly button)



Trousers' measurements

1. Hip circumference (around hip bone – or where trousers normally be worn)
2. Seat area (largest part)
3. Outside leg (please indicate if it is full length, or around ankle)
- a. Inside leg (optional)
4. Thigh circumference
5. Calf



Other information (optional)

1. Please include 3 photos of you (front facing, on the side, and from the back)
2. Indicate your height and weight.
3. Let us know what fit you preferred (slim/regular/loose fitting)